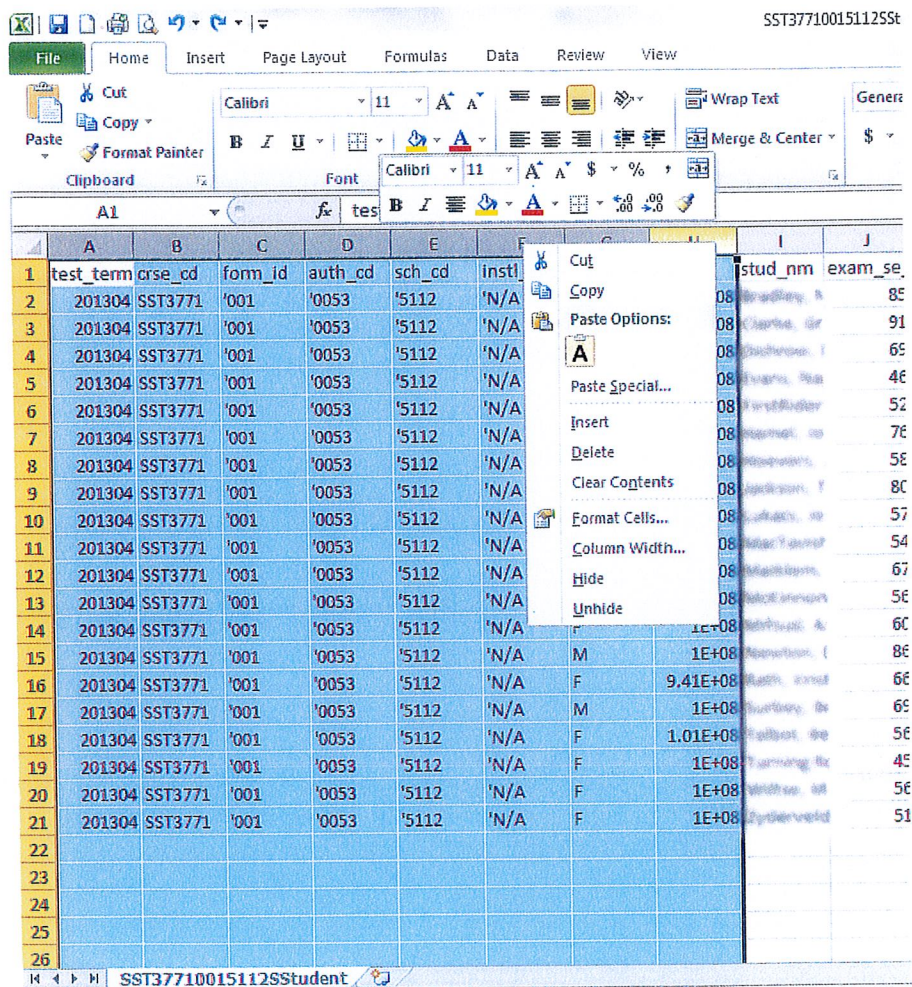


* Please Note that these instructions can be used for
Social Studies 30-2, English 30-1, English 30-2

S.S. 30-1 Histogram Template Instructions

1. You will need 3 files open. The PDF results file, Excel results file and the Excel Histogram template.
2. Within the Excel results file, highlight columns A – H, right click and select delete.

SST37710015112SSt



	A	B	C	D	E	F	G	H	I	J
1	test_term	crse_cd	form_id	auth_cd	sch_cd	instl			stud_nm	exam_se
2	201304	SST3771	'001	'0053	'5112	'N/A			08 Bradley, A	85
3	201304	SST3771	'001	'0053	'5112	'N/A			08 Charles, G	91
4	201304	SST3771	'001	'0053	'5112	'N/A			08 Buchanan, I	65
5	201304	SST3771	'001	'0053	'5112	'N/A			08 Evans, R	46
6	201304	SST3771	'001	'0053	'5112	'N/A			08 Forthofer	52
7	201304	SST3771	'001	'0053	'5112	'N/A			08 Gorman, M	76
8	201304	SST3771	'001	'0053	'5112	'N/A			08 Henderson, J	56
9	201304	SST3771	'001	'0053	'5112	'N/A			08 Jackson, Y	80
10	201304	SST3771	'001	'0053	'5112	'N/A			08 Johnson, M	57
11	201304	SST3771	'001	'0053	'5112	'N/A			08 Kiefer, J	54
12	201304	SST3771	'001	'0053	'5112	'N/A			08 Kishner, M	67
13	201304	SST3771	'001	'0053	'5112	'N/A			08 Kishner, M	56
14	201304	SST3771	'001	'0053	'5112	'N/A			08 Kishner, M	60
15	201304	SST3771	'001	'0053	'5112	'N/A	M	1E+08	08 Kishner, M	86
16	201304	SST3771	'001	'0053	'5112	'N/A	F	9.41E+08	08 Kishner, M	66
17	201304	SST3771	'001	'0053	'5112	'N/A	M	1E+08	08 Kishner, M	65
18	201304	SST3771	'001	'0053	'5112	'N/A	F	1.01E+08	08 Kishner, M	56
19	201304	SST3771	'001	'0053	'5112	'N/A	F	1E+08	08 Kishner, M	45
20	201304	SST3771	'001	'0053	'5112	'N/A	F	1E+08	08 Kishner, M	56
21	201304	SST3771	'001	'0053	'5112	'N/A	F	1E+08	08 Kishner, M	51
22										
23										
24										
25										
26										

SST37710015112SStudent

- | | A2 | fx | Font | | |
|----|-------------|---------|--------|----------|-----|
| | A | B | C | D | Rel |
| 1 | stud nm | exam se | ms_tot | scwr_tot | sc |
| 2 | Bradley, B | 85 | 53 | 41 | |
| 3 | Adams, G | 91 | 54 | 46 | |
| 4 | Johnson, S | 69 | 54 | 24 | |
| 5 | Smith, M | 46 | 29 | 22 | |
| 6 | Franklin, D | 52 | 31 | 26 | |
| 7 | Thompson, J | 76 | 57 | 28 | |
| 8 | Robinson, K | 58 | 40 | 25 | |
| 9 | Wilson, L | 80 | 54 | 35 | |
| 10 | Miller, N | 57 | 37 | 26 | |
| 11 | Moore, P | 54 | 31 | 28 | |
| 12 | Anderson, R | 67 | 51 | 24 | |
| 13 | Stewart, T | 56 | 40 | 23 | |
| 14 | Adams, G | 60 | 32 | 33 | |
| 15 | Robinson, K | 86 | 56 | 39 | |
| 16 | Smith, M | 66 | 43 | 30 | |
| 17 | Johnson, S | 69 | 47 | 30 | |
| 18 | Franklin, D | 56 | 34 | 28 | |
| 19 | Thompson, J | 45 | 20 | 28 | |
| 20 | Robinson, K | 56 | 32 | 29 | |
| 21 | Franklin, D | 51 | 28 | 28 | |
| 22 | | | | | |
| 23 | | | | | |
| 24 | | | | | |

- | ta | Jan 2013 Data | Summ |
|----|---------------|------|
|----|---------------|------|

- | | | |
|------|----------|-----|
| | Total--> | 100 |
| Name | | |

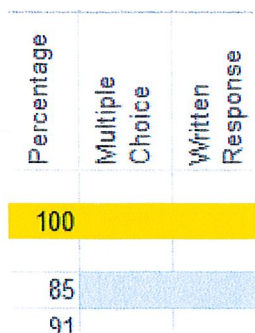
c. Paste.

	Percentage	Multiple Choice	Written Response	R11
Total-->	100			
Name				
Bradley, Noah Jano	85			
Charles, Cassidy Ranae	91			
Duchamps, Logan Chae	69			
Evans, Haggaleen De	46			
FordHester, Brooklyn	52			
Hansen, Joshua Gler	76			
Hansen, Jordan Ki	58			
Jackson, Taylor Joe	80			
Lofgren, Amanda Ma	57			
Ma, Tamiel Michael	54			
Markham, David Will	67			
McKinnon, Evangeline	56			
McKinnon, Amanda Lee	60			
Newton, David Alan	86			
Reith, Avery Lee Lee	66			
Seiberg, Brett Lance	69			
Talbot, Beth Marie	56			
Turney, Mike Mike	45			
Wilcox, Miranda Lee	56			
Zydenwald, Alyssa Iv	51			

5. Within the Excel results file, select and copy the Multiple Choice (Column C) and Written Response (Column D) raw scores. Again, do not select Row 1.

	C2		f _x	53	
	A	B	C	D	E
1	stud nm	exam se	ms tot	sc wr tot	sc Related Is
2	Bradley, N	85	53	41	6
3	Charles, C	91	54	46	6
4	Duchamps, L	69	54	24	6
5	Evans, H	46	29	22	2
6	FordHester, B	52	31	26	5
7	Hansen, J	76	57	28	6
8	Hansen, J	58	40	25	4
9	Jackson, T	80	54	35	7
10	Lofgren, A	57	37	26	4
11	Ma, Tamiel	54	31	28	3
12	Markham, D	67	51	24	6
13	McKinnon, E	56	40	23	6
14	McKinnon, A	60	32	33	3
15	Newton, D	86	56	39	7
16	Reith, B	66	43	30	5
17	Seiberg, B	69	47	30	4
18	Talbot, B	56	34	28	5
19	Turney, M	45	20	28	3
20	Wilcox, M	56	32	29	5
21	Zydenwald, A	51	28	28	4
22					

6. Within the Histogram template, select the "Blue" cell under the Multiple Choice column.



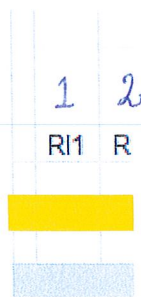
7. Paste

* Column E to Column P ENG 30-1
 * Column E to Column Q ENG 30-2
 * Column E to Column Q SS 30-2

8. Within the Excel Results file, select and copy the scores from Column E to Column R (not Row 1).

Font Alignment Number Conditional Formatting Styles Cell Styles Insert Delete Format Editing																
fx 6																
	D	E	F	G	H	I	J	K	L	M	N	O	P	Q	R	S
33	41	6	20	20	7	29	24	3.5	4	4	4	4	4.5	4.5	4	4
54	46	6	21	21	6	26	28	4	4.5	4	4	3.5	5	5	5	5
54	24	6	22	19	7	29	25	2.5	2	2	0	3	2.5	3	3	3
29	22	2	12	10	5	15	14	2.5	2.5	2	2.5	3	2.5	2	2	2
31	26	5	13	7	6	14	17	3.5	4	3.5	3.5	3.5	2.5	2	2	1.5
57	28	6	23	21	7	30	27	2.5	2.5	2	2.5	3	3	3	3	3
40	25	4	17	14	5	20	20	2	3	2.5	3	3.5	2	1.5	2.5	3
54	35	7	21	20	6	27	27	3.5	3.5	4	2.5	3.5	3.5	3.5	3.5	4
37	26	4	14	13	6	17	20	3	3	3	3	3	2	2	2	3
31	28	3	14	10	4	19	12	3	2	3	2.5	3	2.5	2.5	3	3.5
51	24	6	21	18	6	25	26	1.5	1.5	2.5	2	2	3.5	2.5	2.5	2.5
40	23	6	15	16	3	23	17	3	3	3	2.5	3.5	2	2	1.5	2
32	33	3	14	11	4	16	16	3.5	3	4	3	3.5	3.5	3	3	3.5
56	39	7	22	22	5	28	28	5	4	5	3.5	5	4	3	3.5	4
43	30	5	17	16	5	24	19	3	3	3	3	3.5	2.5	3	3	3
47	30	4	18	18	7	22	25	3.5	3	4	3	3	3	2.5	3	3
34	28	5	13	12	4	18	16	3	2.5	2.5	3	3	2.5	2.5	2.5	3.5
20	28	3	6	10	1	12	8	4	3	2.5	3	3.5	3	2.5	2.5	2.5
32	29	5	10	14	3	15	17	3	3	3	2.5	2	2.5	3.5	3	3
28	28	4	11	9	4	16	12	2.5	2.5	2.5	3	3	2.5	3	3	3

9. Within the Histogram template, select the "blue" cell under the RI1 column.

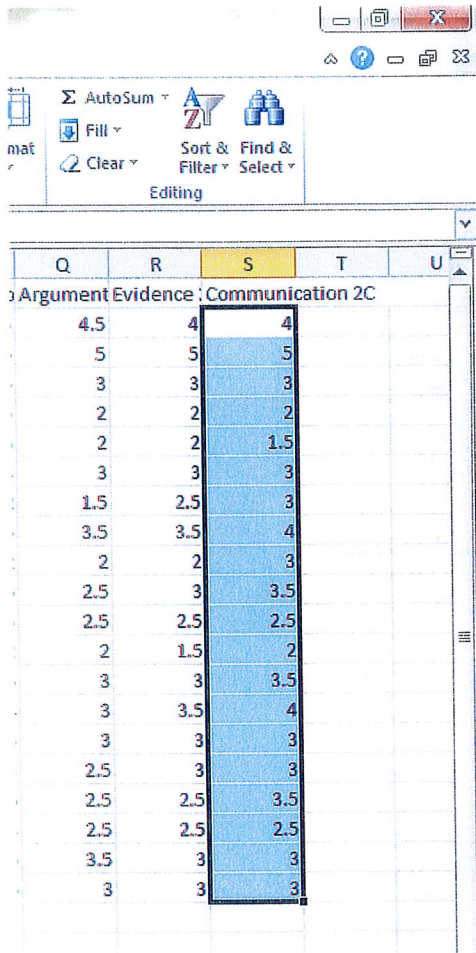


* 1 column
 (Multiple Choice 1 column)
 ENG 30-1 and ENG 30-2

10. Paste.

* Column Q ENG 30-1 (2C0)
 * Column R ENG 30-2 (3W5)
 * Column S SS 30-2

11. Within the Excel results file, select and copy Column S (not Row 1).



Q	R	S	T	U
4.5	4	4		
5	5	5		
3	3	3		
2	2	2		
2	2	1.5		
3	3	3		
1.5	2.5	3		
3.5	3.5	4		
2	2	3		
2.5	3	3.5		
2.5	2.5	2.5		
2	1.5	2		
3	3	3.5		
3	3.5	4		
3	3	3		
2.5	3	3		
2.5	2.5	3.5		
2.5	2.5	2.5		
3.5	3	3		
3	3	3		

2C0 ENG 30-1
 3WS ENG 30-2
 3 SS 30-2

12. Within the Histogram template, select the "blue" cell in the 2C.

3 SS 30-2
 2C0 ENG 30-1
 3WS ENG 30-2
 2C



13. Paste.

14. To fill in the Yellow Cells within the Histogram template:

- B2, write School Name
- B5, write 50.
- B6, write 80.
- D14 – in the PDF results file, Table 2

Table 2
Social Studies 30-1
Percentage Distribution of A, B, C, and F,
Averages, and Standard Deviations of Scores

Scores	School-Awarded Mark		Diploma Examination Mark		Final Course Mark	
	Prov.	School	Prov.	School	Prov.	School
A (80 - 100%)	34.9	35.0	13.5	20.0	19.8	25.0
B (65 - 79%)	44.4	65.0	36.0	25.0	44.5	35.0
C (50 - 64%)	19.1	0.0	34.5	45.0	32.8	40.0
F (0 - 49%)	1.6	0.0	16.0	10.0	2.9	0.0
Average Percent Score	73.5	78.1	63.8	64.0	69.0	71.4
Standard Deviation	11.2	9.6	13.6	13.6	11.4	11.3

Please refer to "Guidelines for Interpreting the Diploma Examination Detailed Reports" for suggestions about how to use this report

- D15 – in the PDF results file, Table 2

Table 2
Social Studies 30-1
Percentage Distribution of A, B, C, and F,
Averages, and Standard Deviations of Scores

Scores	School-Awarded Mark		Diploma Examination Mark		Final Course Mark	
	Prov.	School	Prov.	School	Prov.	School
A (80 - 100%)	34.9	35.0	13.5	20.0	19.8	25.0
B (65 - 79%)	44.4	65.0	36.0	25.0	44.5	35.0
C (50 - 64%)	19.1	0.0	34.5	45.0	32.8	40.0
F (0 - 49%)	1.6	0.0	16.0	10.0	2.9	0.0
Average Percent Score	73.5	78.1	63.8	64.0	69.0	71.4
Standard Deviation	11.2	9.6	13.6	13.6	11.4	11.3

Please refer to "Guidelines for Interpreting the Diploma Examination Detailed Reports" for suggestions about how to use this report

- D17 – in PDF results file, Table 2, add the 3 circles numbers

Table 2
Social Studies 30-1
Percentage Distribution of A, B, C, and F,
Averages, and Standard Deviations of Scores

Scores	School-Awarded Mark		Diploma Examination Mark		Final Course Mark	
	Prov.	School	Prov.	School	Prov.	School
A (80 - 100%)	34.9	35.0	13.5	20.0	19.8	25.0
B (65 - 79%)	44.4	65.0	36.0	25.0	44.5	35.0
C (50 - 64%)	19.1	0.0	34.5	45.0	32.8	40.0
F (0 - 49%)	1.6	0.0	16.0	10.0	2.9	0.0
Average Percent Score	73.5	78.1	63.8	64.0	69.0	71.4
Standard Deviation	11.2	9.6	13.6	13.6	11.4	11.3

Please refer to "Guidelines for Interpreting the Diploma Examination Detailed Reports" for suggestions about how to use this report

g. D18 – in PDF results file, Table 2

Table 2
Social Studies 30-1
Percentage Distribution of A, B, C, and F,
Averages, and Standard Deviations of Scores

Scores	School-Awarded Mark		Diploma Examination Mark		Final Course Mark	
	Prov.	School	Prov.	School	Prov.	School
A (80 - 100%)	34.9	35.0	13.5	20.0	19.8	25.0
B (65 - 79%)	44.4	65.0	35.0	25.0	44.5	35.0
C (50 - 64%)	19.1	0.0	24.5	45.0	32.8	40.0
F (0 - 49%)	1.6	0.0	16.0	10.0	2.9	0.0
Average Percent Score	73.5	78.1	63.8	64.0	69.0	71.4
Standard Deviation	11.2	9.6	13.6	13.6	11.4	11.3

refer to "Guidelines for Interpreting the Diploma Examination Detailed Reports" for suggestions about how to use this report.

h. J6 – in PDF results file, Table 7.1

* For ENG 30-1 and ENG 30-2 there are 3 lines in the top section and 3 lines in the bottom section.

Table 7.1
Social Studies 30-1
Part B – Raw Score Results, by Reporting Category

Reporting Category	Number of Items (60)	Average		Standard Deviation	
		Prov.	School	Prov.	School
1. Related Issue 1	7	4.6	4.9	1.6	1.4
2. Related Issue 2	24	16.2	16.2	4.6	4.7
3. Related Issue 3	22	13.9	15.1	4.2	4.7
Related Issue 4	7	4.8	5.1	1.6	1.6
A. Understanding and Analysis	31	20.6	21.3	5.3	5.8
B. Evaluation and Synthesis	29	18.9	19.9	5.7	6.1

#

i. K6 – write 45

j. L6 – leave empty

k. M6 – in PDF results file, Table 7.1

Table 7.1
Social Studies 30-1
Part B – Raw Score Results, by Reporting Category

Reporting Category	Number of Items (60)	Average		Standard Deviation	
		Prov.	School	Prov.	School
Related Issue 1	7	4.6	4.9	1.6	1.4
Related Issue 2	24	16.2	16.2	4.6	4.7
Related Issue 3	22	13.9	15.1	4.2	4.7
Related Issue 4	7	4.8	5.1	1.6	1.6
Understanding and Analysis	31	20.6	21.3	5.3	5.8
Evaluation and Synthesis	29	18.9	19.9	5.7	6.1

l. N6 – in PDF results file, Table 7.1

Table 7.1
Social Studies 30-1
Part B – Raw Score Results, by Reporting Category

Reporting Category	Number of Items (60)	Average		Standard Deviation	
		Prov.	School	Prov.	School
Related Issue 1	7	4.6	4.9	1.6	1.4
Related Issue 2	24	16.2	16.2	4.6	4.7
Related Issue 3	22	13.9	15.1	4.2	4.7
Related Issue 4	7	4.8	5.1	1.6	1.6
Understanding and Analysis	31	20.6	21.3	5.3	5.8
Evaluation and Synthesis	29	18.9	19.9	5.7	6.1

m. O6 – in PDF results file, Table 7.1

Table 7.1
Social Studies 30-1
Part B – Raw Score Results, by Reporting Category

Reporting Category	Number of Items (60)	Average		Standard Deviation	
		Prov.	School	Prov.	School
Related Issue 1	7	4.6	4.9	1.6	1.4
Related Issue 2	24	16.2	16.2	4.6	4.7
Related Issue 3	22	13.9	15.1	4.2	4.7
Related Issue 4	7	4.8	5.1	1.6	1.6
Understanding and Analysis	31	20.6	21.3	5.3	5.8
Evaluation and Synthesis	29	18.9	19.9	5.7	6.1

n. P6 – in PDF results file, Table 7.1

Table 7.1
Social Studies 30-1
Part B – Raw Score Results, by Reporting Category

Reporting Category	Number of Items (60)	Average		Standard Deviation	
		Prov.	School	Prov.	School
Related Issue 1	7	4.6	4.9	1.6	1.4
Related Issue 2	24	16.2	16.2	4.6	4.7
Related Issue 3	22	13.9	15.1	4.2	4.7
Related Issue 4	7	4.8	5.1	1.6	1.6
Understanding and Analysis	31	20.6	21.3	5.3	5.8
Evaluation and Synthesis	29	18.9	19.9	5.7	6.1

o. Q6 – in PDF results file, Table 7.1

Table 7.1
Social Studies 30-1
Part B – Raw Score Results, by Reporting Category

Reporting Category	Number of Items (60)	Average		Standard Deviation	
		Prov.	School	Prov.	School
Related Issue 1	7	4.6	4.9	1.6	1.4
Related Issue 2	24	16.2	16.2	4.8	4.7
Related Issue 3	22	13.9	15.1	4.2	4.7
Related Issue 4	7	4.8	5.1	1.6	1.6
Understanding and Analysis	31	20.6	21.3	5.3	5.8
Evaluation and Synthesis	29	18.9	19.9	5.7	6.1

p. R6 – in PDF results file, Table 7.1

Table 7.1
Social Studies 30-1
Part B – Raw Score Results, by Reporting Category

Reporting Category	Number of Items (60)	Average		Standard Deviation	
		Prov.	School	Prov.	School
Related Issue 1	7	4.6	4.9	1.6	1.4
Related Issue 2	24	16.2	16.2	4.8	4.7
Related Issue 3	22	13.9	15.1	4.2	4.7
Related Issue 4	7	4.8	5.1	1.6	1.6
Understanding and Analysis	31	20.6	21.3	5.3	5.8
Evaluation and Synthesis	29	18.9	19.9	5.7	6.1

q. S6 – write 5

r. T6 – write 5

s. U6 – write 5

t. V6 – write 5

u. W6 – write 5

v. X6 – write 5

w. Y6 – write 5

* ~~x. Z6 – write 5~~

* ~~y. AA6 – leave blank~~

* ~~z. AB6 – write 5~~

ENG 30-2 (HAS x, v, and z).

NOT FOR ENG 30-1 (x, y, and z).

NOT FOR SS 30-2
(y and z)

15. The Summary Data, Summary Graph, and Yearly Graphs are now available for analysis.

